



## Adopt a Health Habit®



- ◆ *The fun, economical and natural healthy approach to improve daily personal hygiene for the entire family!*
- ◆ *The attachable bidet system that transforms your toilet into a bidet without expensive, messy plumbing alterations.*
- ◆ *The natural way to obtain relief from minor common physical discomforts.*
- ◆ *A do it yourself project with easy to follow instructions and complete installation kit.*
- ◆ *It is specifically beneficial to the elderly and physically challenged.*
- ◆ *Warranted by the manufacturer for a full year.*

## Adaptable Bidet System for Toilets



*In Use*

*Retracted*

**WITH** 



**YOU'LL NEVER  
RUN OUT OF PAPER AGAIN**

# 4 in 1 Installation

**Hot & Cold / Cold Water**

## INSTALLATION INSTRUCTIONS



**NOTE:** Your new GoBidet system comes with the option to be installed as a cold water only system or a hot & cold water system. A large support bracket is included for installation on a one-piece toilet. This unit is made to mount on both regular/round or elongated toilets.

### ATTACHMENT TO ONE-PIECE TOILET

If you are installing your bidet system onto a one-piece toilet you will need to replace the support bracket on the unit with the longer support bracket included in your box.

- [1] Firmly holding the bidet system body remove the 9/16" chrome nut located under the GoBidet label by unscrewing with a 9/16" wrench.
- [2] Simply replace with the longer support XLG bracket and tighten 9/16" chrome nut.

**NOTE:** Some regular and one-piece toilets are fitted with French contour seat that will not allow your bidet system to perform properly.

**REMEMINDER:** Keep your Regular or XLG bracket for future use should you need to change toilet.

### 4 IN 1 INSTALLATION INSTRUCTIONS

- [1] Remove toilet seat.
- [2] Center support bracket [G] on right side of toilet as shown. Insert bushing [C] through top and secure from bottom with plastic washer [D] and bronze nut [E] before completely tightening move shower arm [H] to it's maximum extension, moving the support bracket [G] until shower arm [H] is in center of toilet. (on retracting - shower arm [H] should fall beneath toilet rim).
- [3] Once this is done finish tightening support bracket [G] in place.
- [4] Place plastic spacer [B] over left side opening as shown in Fig.1, and proceed to replace toilet seat cover on it's original place.

### HOW TO CONNECT COLD WATER LINE

Your bidet system comes with a 3/8" plug included already in place for cold water only installation ("H" inlet: as shown in fig.2).

Most homes have an angle stop valve to supply water to the toilet or vanity sink. Shut off that valve; then flush the toilet completely and proceed to disconnect the existing flexible or pipe from the toilet at the angle stop. Place the enclosed

EZ-Connector onto the angle stop and tighten it properly. Proceed to connect the enclosed flexible to the BIDET, and EZ-Connector 3/8 outlet. After reconnect the toilet tank supply line to the remaining EZ-Connector outlet. (See fig.2)

**ATTENTION:** Please use enclosed plug\* in hot water opening for optional COLD WATER ONLY connection. (\*Always use teflon tape)

### HOW TO CONNECT HOT WATER LINE

To use your bidet system with Hot & Cold water, you must remove the existing 3/8" plug (H inlet: as shown in fig. 2) from the unit and proceed to connect a 3/8" male compression flexible hose (NOT INCLUDED) to "H" inlet. (as shown in Fig. 2)

Hot water connection can be obtained from the closest hot water source, (ex.: vanity sink, shower, heater). Proceed to follow installation instructions same as cold water connection. (See fig.2)

**NOTE:** Distances for hot water supply vary in all cases, therefore flexible hose for H/C is not provided with the system.

### HOW TO USE YOUR PERSONAL HYGIENE SYSTEM



[1] Once you are seated, with your right hand move lever (L) towards you, to position shower head to the center of the toilet bowl. For better aim one can always move lever (L) back and forth to find a comfortable position.

[2] As shown in Fig. 3 proceed VERY GENTLY to move knob/handle(K) backwards until you receive a soothing water pressure. By turning knob/handle(K) from side to side you can graduate the desired temperature (See Fig.4). For cold water wash only, you can position knob/handle to blue indicator side for permanently, and simply push back and forth to activate water flow.

[3] Once you feel freshly cleansed, turn off your bidet system by pushing knob/handle(K) forward as shown in Fig. 3. Then proceed to move lever (L) back to the right to get shower head in its original position for future use.

### COMO UTILIZAR SU SISTEMA DE HIGIENE PERSONAL



[1] Una vez que esta comodamente sentado en el sanitario, con la mano derecha desplace la palanquilla (L) hacia usted, hasta posicionar el cabezal ducha en el centro del sanitario. Para su mayor comodidad puede ajustar moviendo la palanquilla (L) suavemente hacia atrás o adelante, hasta lograr la posición de contacto deseado.

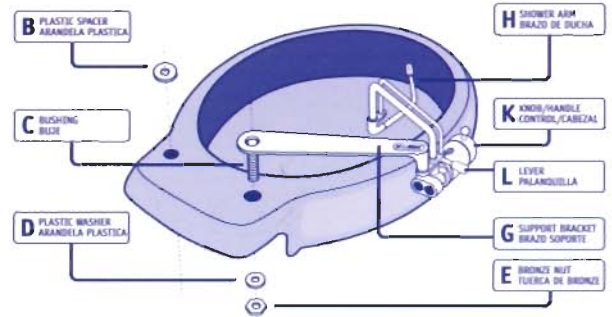
[2] Como se muestra en la Fig.3 proceda a mover el control/cabezal de comando (K) suavemente hasta lograr la presión de agua satisfactoria en la zona deseada para alcanzar una limpieza total. Mover el control/cabezal de comando (K) en forma lateral de lado a lado (azul a rojo), para graduar la temperatura deseada (ver Fig.4). Para uso de agua fría solamente; deje el control/cabezal de comando (K) en posición indicadora azul y simplemente mover hacia atrás y adelante el control para activar un confortable flujo de agua.

[3] A la vez que se sienta completamente limpio y fresco, cierre el paso del agua con el control/cabezal (K) con un simple movimiento hacia delante, como se indica en Fig. 3. Luego proceda mover la palanquilla (L) hacia la derecha para ubicar el cabezal ducha en la posición original hasta el proximo uso del sanitario.

**Congratulations! You have taking the first step to "Adopt a Healthy Habit"!**

**Felicitaciones! Usted ha dado el primer paso en "Adoptar Un Habito Saludable"!**

Fig. 1



For ONE PIECE TOILET use XLG Bracket.

Para SANITARIOS DE UNA SOLA PIEZA usar Brazo XLG.

Fig. 2

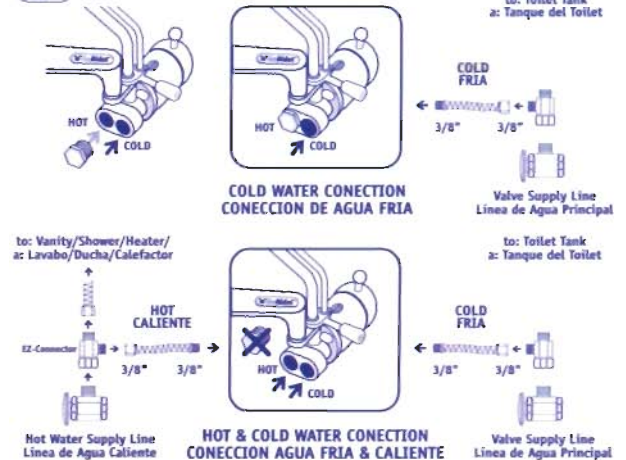


Fig. 3

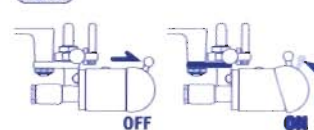


Fig. 4



### HOW TO ADJUST ANGLE POSITION

Losen up 9/16 nut and place unit to best position [shower head at the center of the toilet].



Distributed by: